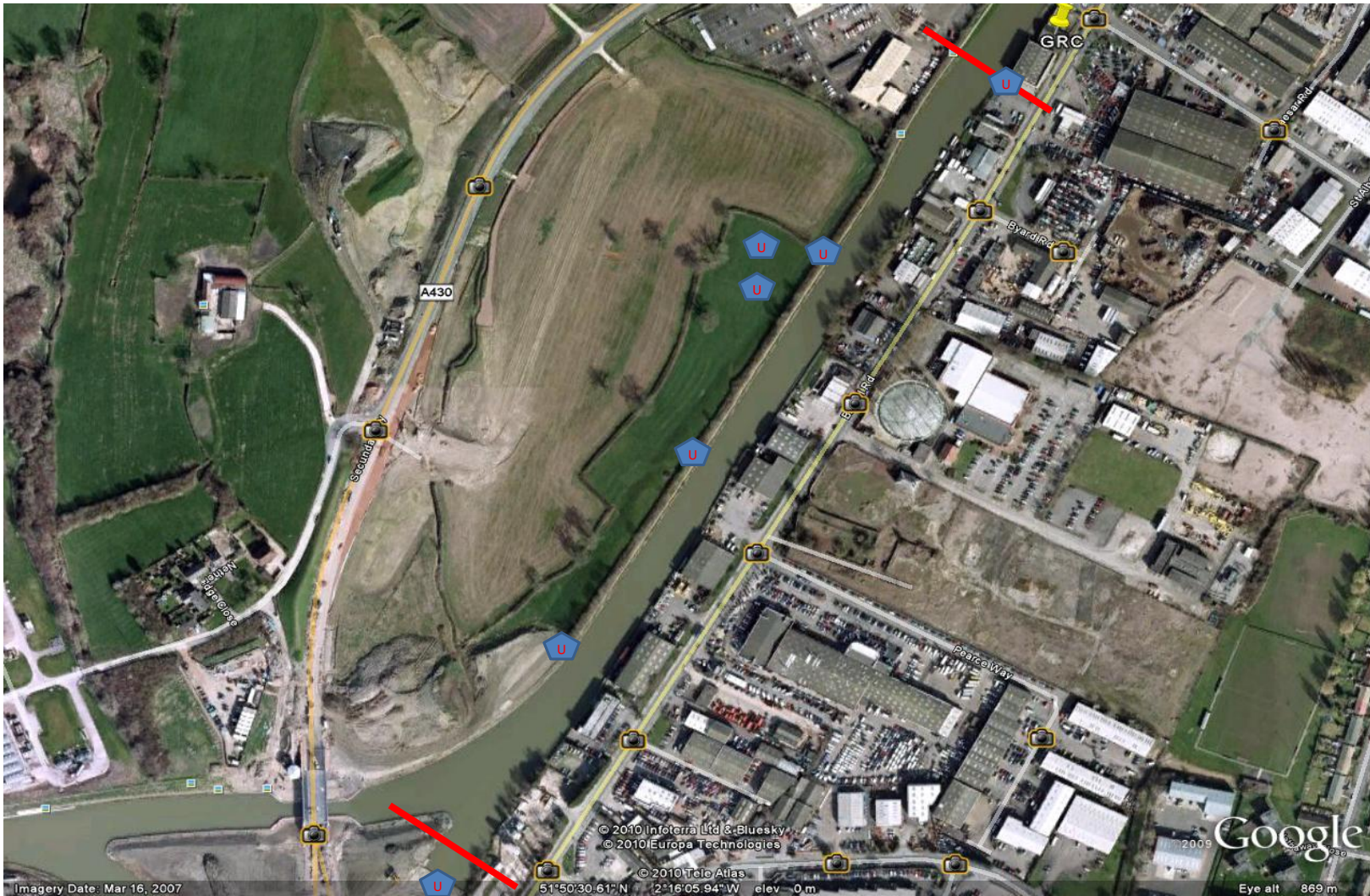


Umpire Points

SATURDAY

- Start On Tow Path Side x 2
- Umpire 1 Opposite Lucas
- Umpire 2 Corner of New Landing Stage
- Finish ProTyre
- Coord New Landing Stage
- Control In field



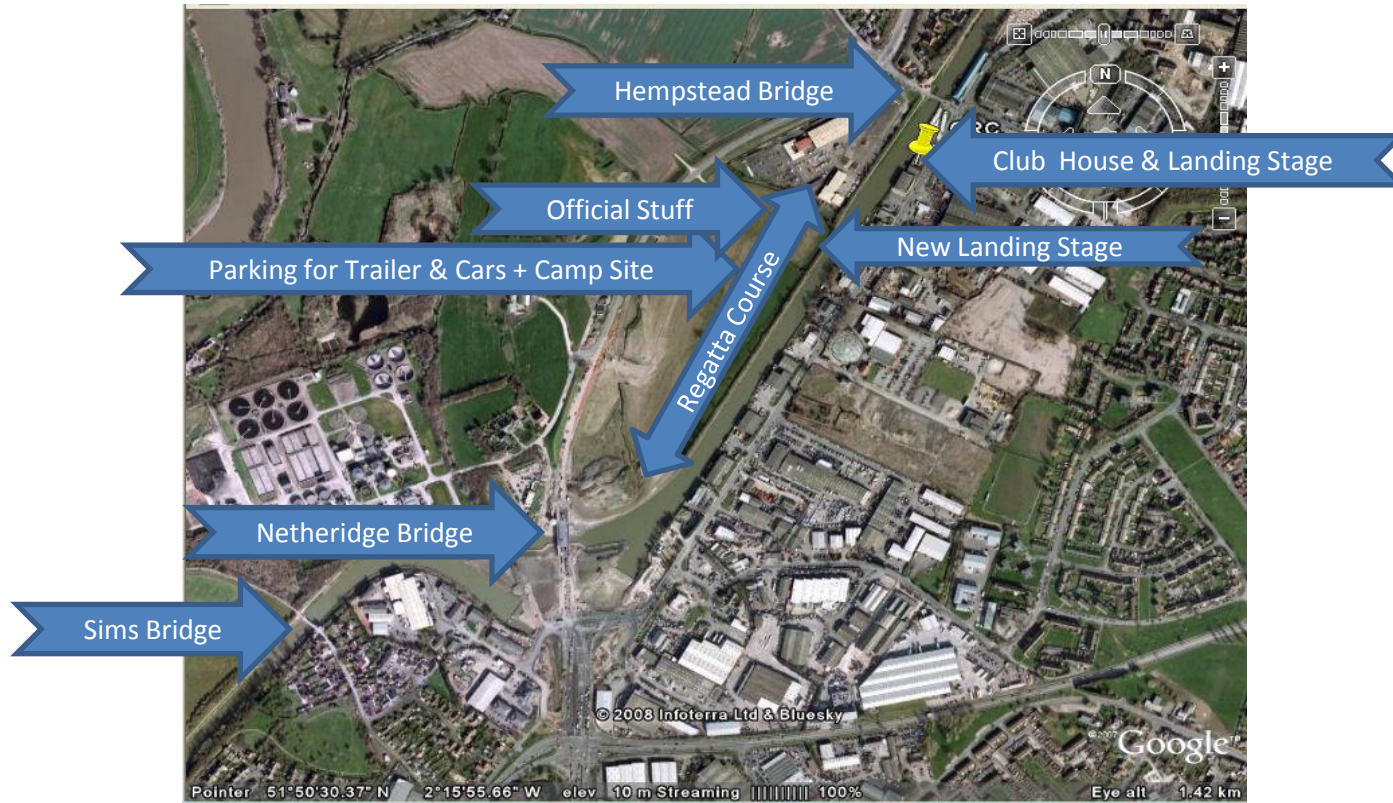


Umpire Points

SUNDAY

- Start But end of canal
- Umpire 1 On bend
- Umpire 2 Opposite Lucas
- Umpire 3 New Landing Stage
- Finish ProTyre
- Coord New Landing Stage
- Control In field





### ACCESS POINTS

**Bridge from Club Access Points Set your Sat Nav on Following Coordinates Bridge Contact Number**

- 2 Llanthany Bridge Latitude 51°51'41.63"N, Longitude 2°15'13.67"W 01452 312143
- 1 Hempstead Bridge Latitude 51°50'45.18"N, Longitude 2°15'50.18"W 01452 521880
- 0 Club House Latitude 51°50'41.54"N, Longitude 2°15'52.11"W 01452 523795
- 0 New Landing Stage Latitude 51°50'36.37"N, Longitude 2°16'00.18"W
- 1 Netheridge Bridge ( New Bridge) Latitude 51°50'18.66"N, Longitude 2°16'24.15"W 01452 507318
- 2 Sims Bridge (First Bridge) Latitude 51°50'17.02"N, Longitude 2°16'46.00"W 01452 501994