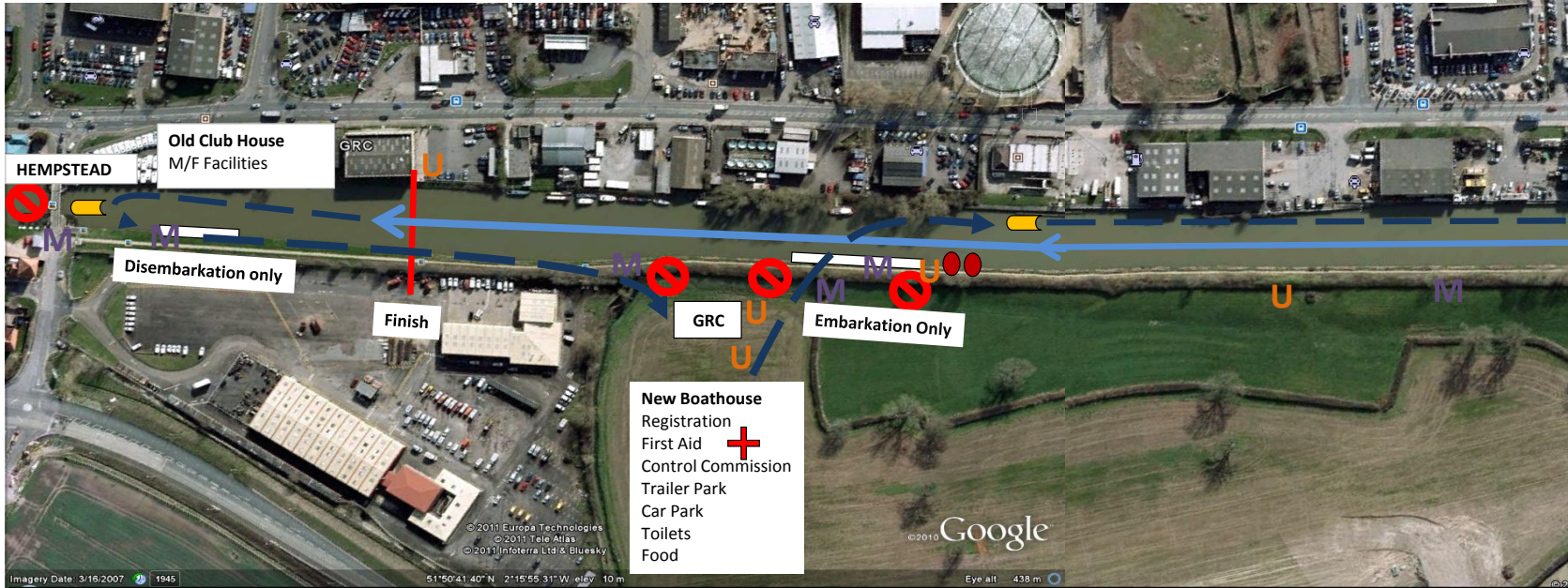


## New Land / Water Circulation Pattern - Racing

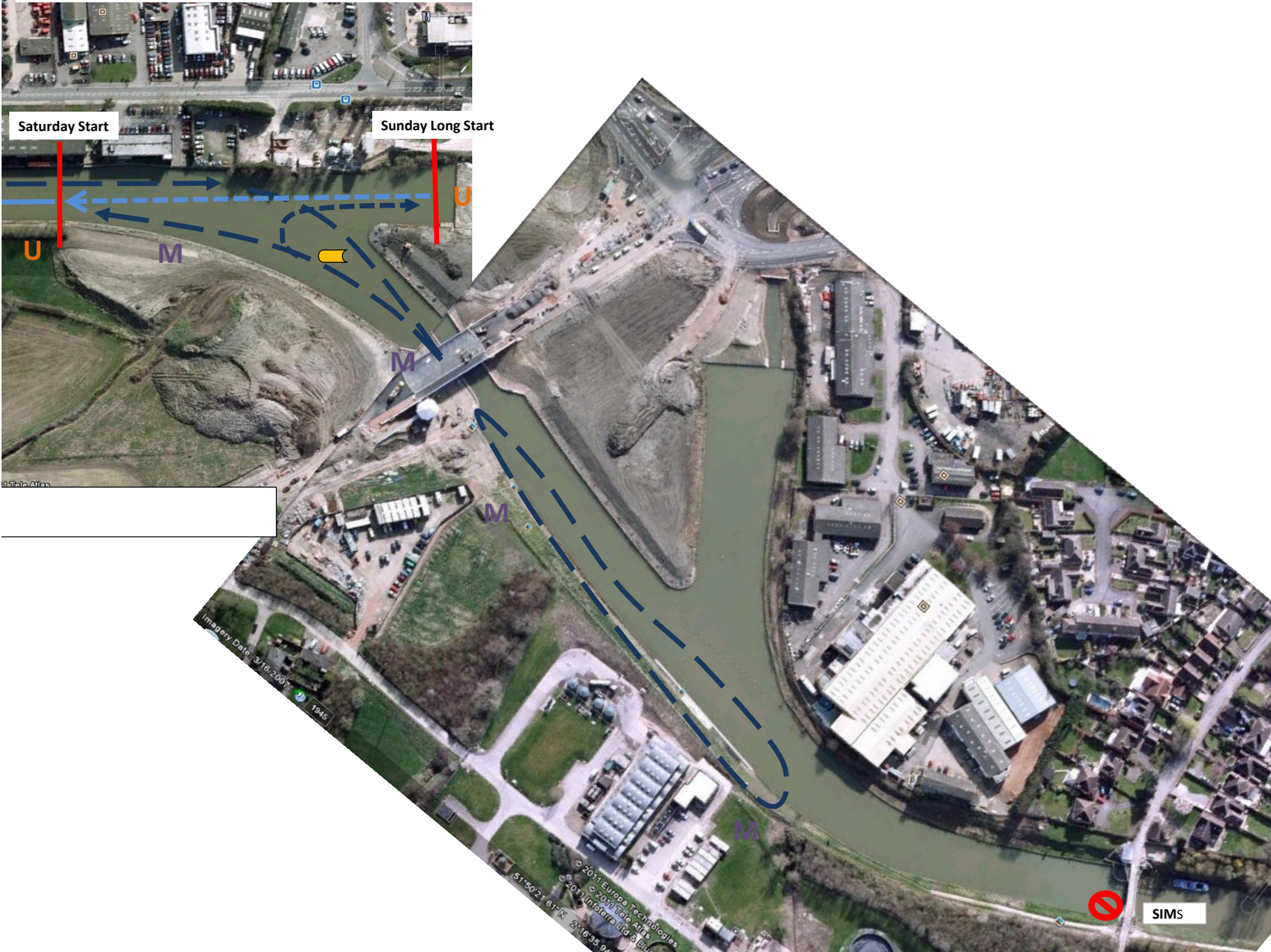
- 1) Boats are to be carried to the New Landing Stage directly from the New Boathouse and not along the towpath. Listen for instructions from the Towpath Marshals.
- 2) Only proceed to the landing stage when instructed to by the Control Commission Marshals.
- 3) Boats are to be parallel to the canal before crossing the towpath.
- 4) Be aware of pedestrians / cyclists when crossing the towpath.
- 5) Once Instructed by the Landing Stage Marshal Boats are to move directly across the canal to the Red Boat / Petrol Station Marshalling Area.



<b>Key</b>			
	Start / Finish Line		Two Lane course Right to Left
	Buoys marking course for corner - Sunday and Landing Stage		Extension to Sunday Two Lane Course
	Rescue / Safety Boats		Non Racing Circulation
	Landing Stage		
			No Boats access On water - Boats are not allowed through Hempstead or Sims Bridge On land - Boats are only allowed across the tow path to the New Landing Stage and on the tow path to the Regatta Field Gate Transgression will lead to disqualification
			Umpire
			First Aid
			Marshal

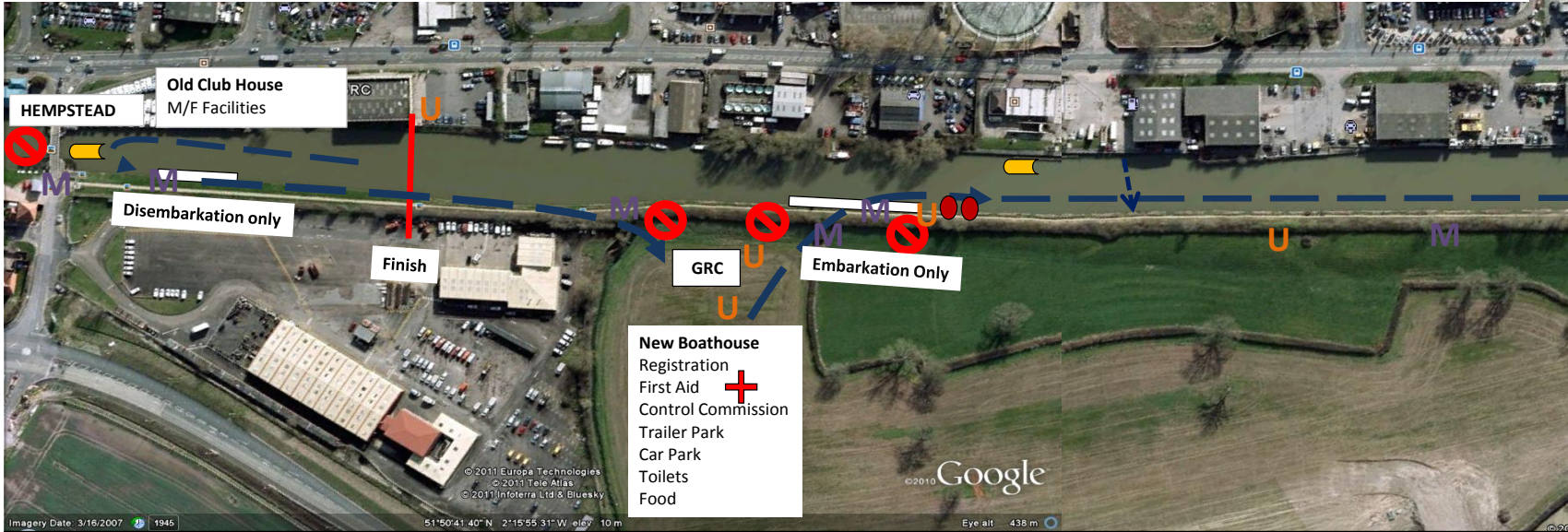
### New Land / Water Circulation Pattern - Racing

- 6) Proceed as instructed by the Petrol Station Marshal on the Port / non tow path side of the canal, pass the start and as directed through the bridge before turning back towards the start by the Marshals at the Start.
- 7) After Racing continue through the finish, passed the old clubhouse landing stage, keeping to the Starboard / non towpath side / old clubhouse side.
- 8) Turn before the bridge and onto the temporary landing stages. Follow the Landing Stage Marshal Instructions.
- 9) Carry Boats along the towpath watching out for pedestrians / cyclists.



## New Land / Water Circulation Pattern - Bridge Open - Waterway Open

- 1) ) Boats are to be carried to the New Landing Stage directly from the New Boathouse and not along the towpath. Listen for instructions from the Towpath Marshals.
- 2) Only proceed to the landing stage when instructed to by the Control Commission Marshals.
- 3) Boats are to be parallel to the canal before crossing the towpath.
- 4) Be aware of pedestrians / cyclists when crossing the towpath..
- 5) **Once Instructed by the Landing Stage Marshal Boats are to move to the start on the Starboard / Towpath side of the canal.**
- 6) **Proceed as instructed by the Petrol Station Marshal, Umpires and Marshals on the Starboard / Towpath side of the canal, pass the start and as directed either through the bridge or the turning bay at the start.**



**New Land / Water Circulation Pattern - Bridge Open - Waterway Open**

7) Boats held by the Petrol Station, when told by the Petrol Station Marshal, should cross as quickly as possible to the Starboard / Towpath side of the canal.

8) Keep a good look out for Canal traffic, do not assume they have seen you or are able to stop in a timely maner - discretion is the better part of valour.

